

ST MARY MACKILLOP COLLEGE

EST 1988

2019 PROSPECTUS



"Try always to be generous"
Saint Mary Mackillop 1882

Welcome to St Mary MacKillop College

St Mary MacKillop College is a Year 7 to 12, coeducational Catholic Secondary School in the tradition of St Mary of the Cross MacKillop – Australia's first Saint. At St Mary MacKillop College we are committed to developing the potential of all members of our school community.

The school achieves its mission by seeking to develop the potential of all members of the community. This includes the spiritual, academic, artistic and sporting dimensions of school life.

In this prospectus you will get a taste of what school life is like at St Mary MacKillop College including:

- College Overview
- Our Vision and Mission
- Curriculum
- Opportunities
- Pathways
- Wellbeing & Pastoral Care
- Our House System
- Uniform Policy
- Enrolment Policy
- 2019 Schedule of Fees and Charges



Need more information?

If you have any question about St Mary MacKillop College or would like detailed information on our enrolment process, please phone 03 5032 9771 or visit our website smmc.vic.edu.au.

College Overview

‘There, where you are, you will find God.’

These words of Mary MacKillop in 1871 and the teaching of Julian Tenison Woods ‘for us to have faith in God’s presence in every circumstance’, sums up what spirituality is for the Sisters of St Joseph. It is this spirituality that we seek to incorporate into all that we do at St Mary MacKillop College, as the core values of the school are centred on knowing and living the Gospel message of Jesus Christ. The Sisters of St Joseph have played a key role in the development of the College, and the College maintains a strong commitment to the charism of Australia’s first saint, Saint Mary of the Cross MacKillop and the Josephite Order.

The Order of the Sisters of St Joseph of the Sacred Heart was co-founded by Fr Julian Tenison Woods and Mary MacKillop in 1866. Mary and Julian had a deep sense of call to respond to the needs of the isolated children in outback Australia who were not receiving any education and in 1866 the first Josephite school was opened in Penola following the founding of the Sisters of St Joseph Congregation.

St Mary MacKillop College sprang from the Catholic Primary School, St Mary’s, in the 1980s. In 1988, the first Year 12 students completed their Year 12 studies at the school.

The College has kept a stable enrolment over the past few years with an enrolment of around 430 students. It is situated centrally in Swan Hill, a large town on the south bank of the Murray River. The school makes use of the town services and facilities.

St Mary MacKillop College is well resourced with a strategic plan that includes:

- The opening of a Hospitality Trades Skills Centre (2016)
- Refurbishment of the Maths classrooms (2017)
- Refurbishment of the Learning Resource Centre (Library) to include IT and Learning Support (2017)
- Year 12 study centre, Pathways and Teaching & Learning Offices (2019)



Vision

As partners in Catholic education and open to God's presence, we pursue fullness of life for all.

Mission

At St Mary MacKillop College we are people who affirm the dignity of every person, who act with respect and compassion, who reverence relationships, who have hearts for generosity and forgiveness.

- We celebrate our Catholic identity.
- We respect the unique dignity, faith and gifts of each person.
- We value learning, aspiration and connectedness and we work together to create a positive future.

Our Values

We are people who recognise and value the dignity of every person.

We believe in -

- the capacity of all members of our community to make meaningful contribution to the life of our school
- having the opportunity to express, celebrate and live out our faith
- Teaching and Learning that is creative, engaging, purposeful and dynamic
- striving to push the boundaries of our capabilities in order to learn and grow
- a learning environment that allows each member of the community to flourish.

We are people who strive to act with respect and compassion.

We believe in -

- building positive and respectful relationships with all members of our community
- living lives that reflect loving care and service and compassionate hearts
- demonstrating empathy and love of neighbour
- responding to others in our local and global family
- respecting, sharing and caring for the resources of the earth as part of the community of creation.

We are people who give reverence to the relationships formed in our community.

We believe in -

- an attitude of openness, understanding and welcome to others
- a spirit of hospitality and inclusion
- building relationships based in equality, trust and integrity
- listening, speaking and communicating in a way that is respectful and reflects sensitivity to others
- working with others in a spirit of inclusion and authentic collaboration.

We are people who act with generosity and forgiveness.

We believe in -

- promoting resilience and perseverance
- Teaching and Learning for the whole person
- opportunities to live out the Gospel imperative of loving our neighbour
- working to resolve conflict in a restorative way
- active participation in our community
- reaching out to support others.

CURRICULUM

St Mary MacKillop College builds on the foundations established in primary education and adds depth through the core curriculum offered at Years 7 and 8. During these years students are given the opportunity to access curriculum which provides exposure to a range of experiences. This enables students to identify their interests and strengths. From Years 9 to 12, students are involved in designing their own learning program through the subject selection process. In adopting a curriculum that is both flexible and inclusive, we can best meet the individual needs of each student in our College and prepare them for their future pathways.

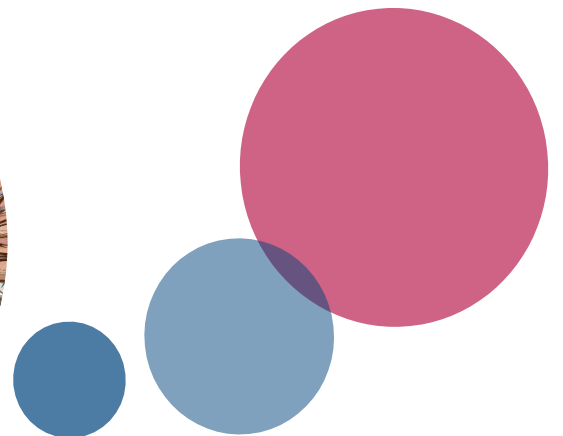
Our Goals

Our goals are to help our students confidently develop their skills and abilities in an educational environment where they feel valued. Whilst maintaining a strong framework in the key areas of learning, we provide our students and parents with increasing choice and control over their learning. This is evident in the curriculum within the special programs and in the co-curricular activities.

It is the aim of the College to help each individual student develop his or her full academic and personal potential. It is important for each student to experience success and to be thoroughly prepared for future life.

We encourage our students to become independent thinkers and learners. For some students there are aspects of learning they find challenging. At St Mary MacKillop College we have a Learning Support team which works with classroom teachers in supporting these students with their learning needs. We also offer programs such as Quicksmart Maths, Making a Difference Literacy and The Listening Program that allow students with areas of need to develop their skills.

The College strives to constantly review, refine and expand the curriculum to meet the changing demands of society, technology, environment and national curriculum guidelines and profiles.



JUNIOR YEARS

In Years 7 and 8 students at St Mary MacKillop College have the opportunity to develop skills and knowledge across many subject areas. This curriculum is derived from Australian Victorian Essential Learning Standards (AusVELS) and incorporates the Australian Curriculum within a framework that reflects Victorian priorities and approaches to learning and teaching.

Core Subjects at Year 7 and 8:

English
Humanities
Mathematics
Physical Education
Religious Education
Science
Wellbeing

Students choose to study either Italian or Japanese in Year 7 and 8.

Elective Subjects at Year 7 and 8:

The electives are designed to deepen understanding and to assist in identifying their strengths and challenges. It exposes them to a range of subjects so that they can make informed decisions in the following years and future pathways.

Over the course of Year 7 and 8 students will study each of the following subjects, two per term.

Art and Design
Drama
Food Studies
Health

Digital Technology
Music
Textiles
Woodwork



MIDDLE YEARS

In Years 9 and 10, students are consolidating their practices and skills in their core subjects, whilst making informed choices about electives they may choose to study. Elective choices provide a broad-based exposure to the options available and assist in the preparation for the more specialised and advanced subject content of studies at VCE level.

VET subjects are offered to Year 10 students who wish to pursue areas of special interest.

Core Subjects at Year 9 and 10:

English
Mathematics
Pathways
Physical Education (Year 9 only)
Religious Education
Science

Elective subjects for Year 9 and 10 students include the following:

Dance	Materials Technology
Drama	Media
Economics	Metal Technology
Food Studies	Music
Geography	Peer Support
Health	Physical Education
History	Visual Art
Digital Technology	Visual Communication and Design
LOTE: Italian	Wood Technology
LOTE: Japanese	



SENIOR YEARS

Our Year 11 and 12 students have a choice of pathway to suit their various learning styles and future aspirations. Our senior curriculum incorporates a large range of academic subjects, as well as opportunities for our older students to undertake vocational courses on-site and also at nearby training facilities.

Subjects offered to our Year 11 and 12 students are:

Accounting

Agricultural & Horticultural Studies

Australian History

20th Century History

Biology

Business Management

Chemistry

Computing

English

Environmental Science

Food Studies

Geography

Health and Human Development

Legal Studies

Literature

LOTE: Italian

LOTE: Japanese

Mathematics – all levels

Psychology

Physics

Physical Education

Product, Design and Technology

- Wood

- Textiles

Religion and Society

Studio Art

Software Development

Theatre Studies

Visual Communication and Design

VCAL

- Literacy

- Numeracy

- Personal Development Skills

- Work Skills

VET courses:

- Agriculture

- Automotive

- Beauty (Nail Technology)

- Building and Construction

- Community Services

- Electrotechnology

- Engineering

- Equine Studies

- Hospitality: Kitchen Operations

- Salon Assistant

- Sport and Recreation



OPPORTUNITIES



St Mary MacKillop College strives to provide our students with a well-rounded education, encouraging a love of learning that will allow them to continue to grow and develop throughout their lives. St Mary MacKillop College caters for young men and women from a range of socio-economic and cultural backgrounds. It provides a range of academic, cultural and sporting opportunities, balanced by a focus on spirituality and education in the Catholic faith.



At St Mary MacKillop College we are committed to supporting each student to maximise their learning goals. Dedicated staff members encourage the students to become creative and confident future learners through a focus on academic rigour while nurturing a strong sense of social justice.

Co-Curricular Activities

Spiritual and Service Activities

In expressing our Catholic identity, the College provides opportunities for students to participate in Masses, other Liturgies, Prayer and Reflection Days. A number of charity fundraising events are selected each year in which students are encouraged to engage with the global community.



Sport

The College fields teams in whole school carnivals, as well as the Swan Hill Regional Sporting competitions. Teams and individuals that perform at a high standard may also progress onto the State or National levels.



Sports which may be offered include:

Athletics, Australian Rules Football, Basketball, Clay Target Shooting, Cricket, Cross Country Running, Equestrian, Golf, Lawn Bowls, Netball, Soccer, Softball, Swimming, Table Tennis, Tennis and Volleyball.

Recreational, Artistic and Cultural Activities

The wide range of recreational, artistic and cultural activities offered by our College encourages students to express individual creative talents and be active members of their College and local community.



These include: Academic Committee, ANZAC Day Commemorative March, Arts Committee, College Formals, Competitions (Mathematics, English and Science), Debating, Environmental Committee, Excursions, Harmony Day, Liturgy Committee, Musical Productions, NAIDOC Day, Peer Support Program, Public Speaking and Social Justice Committee.

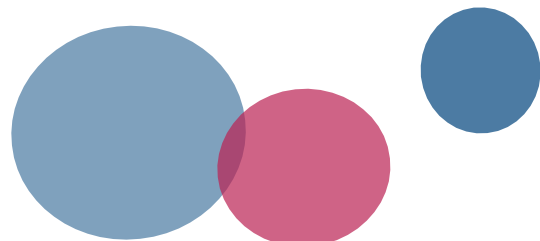
PATHWAYS

St Mary MacKillop College runs a comprehensive careers program to assist students with their career pathways. All students are welcome to access Pathways support, which may include assistance in the areas of; resume writing support, job applications, subject counselling, pathway direction, work experience support, further education options and home study support.

In Years 9 and 10 students have class time dedicated to Pathways each fortnight, and Senior students attend Pathways sessions twice per term. These years are crucial for young people to achieve their potential through education, as research indicates that for young people to be deeply engaged in their learning, they need to see relevance and purpose in their education.

An important feature of the Pathways program is the involvement of students in work experience. This is primarily held in Year 10, with each Year 10 student supported to attend a week long work experience session

Pathways education provides young people with the tools they need to make informed career decisions and transitions from secondary school and throughout their lives. Students are prepared for a variety of pathways, including further training through tertiary education, employment, apprenticeships and traineeships.



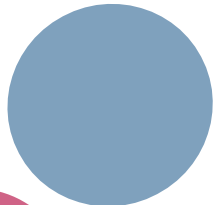
WELLBEING & PASTORAL CARE

At St Mary MacKillop College we believe that strong student wellbeing allows for the best possible learning to take place and we are committed to ensuring that every student in our community can thrive. We enjoy working in partnership with families to support the growth of our students.

The Student Wellbeing Team leads the many and varied wellbeing programs that take place within the school.

The programs include:

- Grade 6 and Year 7 Transition Program
- Wellbeing and Social Justice Student Committee
- 'Who's the Man' – Boys Wellbeing program
- Seasons for Growth
- SenseAbility program by BeyondBlue
- Project RockIt
- Student leadership training
- Retreats and Reflection Days
- Year 7 and 8 Wellbeing classes
- Year 9 and 10 Pathways classes
- Student Support Sessions for Year 11 & 12 students
- Accreditation as an e-smart school



OUR HOUSE SYSTEM

At St Mary MacKillop College, every student and staff member belongs to one of our four Houses; **Solomon, Tension, Woods, or Xavier**. Upon enrolment, students are assigned to a vertical Homeroom in their House, consisting of students from Years 7 – 12. They will remain in this Homeroom, ideally with the same Homeroom teacher, for the length of their journey at the school. The Homeroom teacher is the first point of call for families and works within a House Team led by the House Leader.

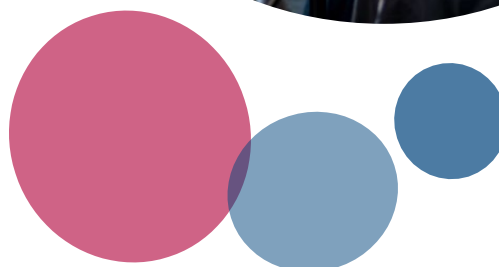
The House system works to strengthen the College's Josephite heritage, enhance the connection of students across and within year groups and encourage greater student and staff engagement in school events and activities. Students attend Homeroom each morning from Monday through Thursday, and student achievement is recognised at weekly House assemblies. On Friday, students attend a whole school assembly in place of Homeroom.

Teacher Advisor Program

The Teacher Advisor program is part of the support Homeroom teachers provide students. Each term every student meets individually with their Teacher Advisor to discuss and monitor their academic and pastoral progress. This regular contact builds trust and ensures that families and teachers know each student's strengths and needs and that secure relationships are formed that guide the students along their learning journey.

MacKillop Cup Points

House members work together every month to earn points for their House, and at the end of the year, the winning House is awarded the MacKillop Cup trophy at our Presentation Night. Points can be earned in the areas of; academics, arts, sport, community service, and living out the school values. The House System encourages teamwork, friendship, service, and leadership as students work for the good of their House.



UNIFORM POLICY

At St Mary MacKillop College students are expected to maintain a high standard of dress and grooming which:

- Supports a positive atmosphere where study and learning flourish
- Promotes school unity and pride
- Promotes individual pride and helps prepare students for employment
- Takes away the need to keep up with the latest fashion trends
- Presents an appropriate image of our College to the broader community.

We ask that all parents embrace our College uniform and the role it plays in your child's day to day life at St Mary MacKillop College.

College uniform is compulsory. Summer uniform is worn during Terms 1 and 4, whilst winter uniform is worn during Terms 2 and 3.

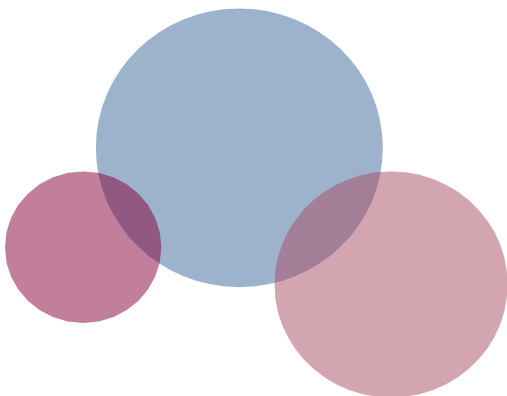
A two week change over arrangement may be announced depending on the prevailing weather conditions.

Girls – Summer (Terms 1 and 4)

- Dress of white, maroon and blue plaid, hemmed to no more that 10cm above the knee.
- Optional navy dress shorts and blue cool weave polo shirt with College logo.
- College jumper.
- Black leather polishable school shoes with a heel (not open sandals).
- Plain white socks.
- College hat is to be worn in Terms 1 and 4.

Boys – Summer (Terms 1 and 4)

- Blue cool weave polo shirt with College logo.
- Optional plain white undershirt – no printing.
- Grey shorts.
- College jumper.
- Plain grey socks.
- Black leather polishable school shoes, or boots with a heel.
- College hat is to be worn in Terms 1 and 4.



UNIFORM POLICY

Girls – Winter (Terms 2 and 3)

- College 'MacKillop' tartan skirt, hemmed to mid knee.
- Optional navy slacks.
- Light blue, long sleeved, collared and buttoned shirt, tucked in.
- College tie.
- College jumper.
- Dark navy tights or socks.
- Black leather polishable school shoes with a heel (not open sandals).
- College jacket may be worn over the College jumper with winter uniform.

Boys – Winter (Terms 2 and 3)

- Light blue, long sleeved, collared and buttoned shirt, tucked in.
- Grey slacks (no jeans).
- College tie.
- Grey socks.
- College jumper.
- Plain black leather belt with plain buckle(optional).
- Black leather polishable school shoes or boots with a heel.
- College jacket may be worn over the College jumper with winter uniform.

Physical Education Uniform

- Maroon polo sports shirt with College logo.
- Navy shorts with College logo.
- Navy Track pants with College logo, no stripes.
- College rugby top.
- College hat.
- White socks.

The Physical Education (PE) Uniform is worn during practical Physical Education classes, practical Dance classes and some VET classes. On these days, Year 7 and 8 students may wear the PE uniform all day.

Year 9 to 12 students may wear the PE uniform to school, if they have a class in lesson 1, or from school, if they have a class in lesson 4. At all other times, students must only wear the PE uniform during Physical Education class time.



UNIFORM POLICY

Personal Presentation

- Hair must be one natural colour only. Extremes in hair colour and styles are not acceptable. Students with extremes of hair colour and/or style will be sent home to remedy the situation.
- No dreadlocks or coloured beads in the hair are permitted.
- Excessively short hair is not permitted – a cut below a number two is unacceptable.
- Hair must be clean, brushed and kept off the face.
- No excess use of hair gel/product.
- If hair is longer than the bottom of the collar, regardless of gender, all hair must be completely tied back with ribbon or elastic band in school colour/s (Black, Navy or Maroon). If a headband is worn it should be black or navy.
- Make-up and coloured nail polish shall not be worn while in school uniform. Acrylic, false nails or shellac are also not permitted.
- Students shall be clean shaven upon arriving to school.
- Visible tattoos are not permitted.

Permitted Accessories

- One watch and/or one fine metal bracelet.
- A maximum of one plain stud or sleeper per ear lobe. Additional piercing or “taping over” is not permitted (including additional plastic studs).
- One fine neck chain with a religious pendant.
- A black or navy scarf and/or beanie, during Terms 2 and 3.
- No bags may be carried to lessons or around the school, with the exception of classes in the Technology Centre, Lesson 4. Sports bags for Physical Education lessons are permitted however these must be stored in the Jubilee Centre once the student has changed.



Eyebrow, nose, lip or other visible jewellery is not acceptable and students will be asked to remove these items while wearing school uniform. Any form of tongue piercing jewellery is not acceptable and students and their parents will be instructed to have it removed immediately (during school time if necessary). Spacers are not permitted at school.

Variances to the College Uniform are made at the discretion of the Principal.



ENROLMENT POLICY

The St Mary MacKillop College enrolment policy has been developed to assist the Principal in the assessment of potential future students' suitability for enrolment at the College. St Mary MacKillop College caters for all who are committed to living out the values and the charism of St Mary MacKillop of the Cross.

Guiding Principles

All enrolments at St Mary MacKillop College will be at the discretion of the Principal, who will be informed by, but not restricted to the following guidelines.

St Mary MacKillop College aims to make available places to any student who seeks enrolment and is prepared to commit to respecting the Catholic nature of the school and its educational goals.

The College welcomes all applications and interviews all applicants. When the number of applications exceeds the number of places that can be made available, preference in enrolment will normally be given to students in the following order:

1. Catholic students
2. Siblings of students already attending the College, or who have attended in the past
3. Children of current staff members
4. Students of other Christian denominations who have attended a Catholic school (Primary or Secondary)
5. Children of past pupils of the College
6. Other students who, in conjunction with their parents, display a willingness to support the philosophy and ethos of the College.

Enrolments will not be considered if the enrolment form is incomplete.

Criteria for Enrolment

Students seeking to transfer to the College from another college must provide a recent report from the previous school, and the school will be contacted for a reference.

No child should be excluded solely on the grounds of race, religion, intellectual or physical disability or the financial situation of the parents.

Children with special needs who can be catered for in the regular classroom will be considered for enrolment upon the recommendation of an integration support group convened by the Principal, specifically to examine the ability of the College to meet those needs.

The enrolling family must give a written commitment to support the College financially. Normally, support would be through full payment of school fees and levies as set by the College. When circumstances indicate that full payment will not be possible, the obligation remains with the family. Individual arrangements can be set in place and it is expected that this be discussed with the Principal before the enrolment process is completed.

Enrolment is ongoing provided the College expectations continue to be met.

A probationary enrolment can assist in making a final decision regarding enrolment.

Students applying to VCE study after a prolonged break will be considered on an individual basis. These students will in most cases be recommended to continue their studies at TAFE or a setting with an adult enrolment.

Class Sizes

All enrolments are subject to class sizes.

At Year 7 and 8, the total number of enrolled should be (or almost be) a multiple of the class size e.g. 24, 48, 72, 96, 120.

Outcome

It is believed that through this Policy, each applicant will be assured a fair and just process.

2019 SCHEDULE OF FEES AND CHARGES

Annual Fee (including Capital Fee):

ONE student family: \$ 2,665.00

TWO student family: \$ 4,797.00

THREE or more student family: \$ 6,396.00

Year Level Levy, per student:

Year 7 \$ 1,325.00

Year 10 \$ 1,320.00

Year 8 \$ 1,360.00

Year 11 \$ 1,360.00

Year 9 \$ 1,495.00

Year 12 \$ 1,090.00

The Annual Fee and Year Level Levy incorporate, but is not limited to, the following:

- Resource and reference material, certificates, awards and presentations.
- Administrative fees.
- Retreats, Camps and Reflection Days.
- Transport for camps/retreats.
- Local school excursions, swimming program, subject competitions.
- Year 7 to 10 Elective subjects (excluding VET subjects).
- Student ID cards.
- Year 7 to 12 MacBook Laptop.

Additional costs:

- Kerang Bus Annual fee per student
- VET programs Annual fee per student (per VET subject)
- VCE subject fees Additional cost associated with studying particular VCE subjects.
- Year 11 Ski Trip Fee per student, to be paid prior to the camp.
- VCAL Camp Fee per student, to be paid prior to the camp.
- Distance Education Fee per student, per subject, to be paid prior to the start of the semester.

Note: Other excursion charges may apply throughout the school year as opportunities arise.

Payment Options

Fee payments may be made by cash (in person at the front reception), cheque, EFTPOS, Credit Card or Direct Debit.

Families who opt to **pay per term**, payment is due by the following dates:

Term 1 – Friday 5th April, 2019 Term 2 – Friday 28th June, 2019

Term 3 – Friday 20th September, 2019

For those who opt for a **one off yearly payment**, payment is due on: Friday 24th May, 2019

Arrangements can be made to pay fees by **instalments** on a weekly, fortnightly or monthly basis. Any families who are experiencing hardship in meeting their school fee commitments are invited to contact the Assistant Business Manager to discuss the options available to them, one of which is applying for a **Betty Currie Scholarship**.



St Mary MacKillop College
PO Box 971
53 McCrae Street
Swan Hill VIC 3585

Phone 03 5032 9771
Fax 03 5032 1885
Email principal@mackillopsh.vic.edu.au
Website www.smmc.vic.edu.au



Mrs Michelle Haeusler
Principal