



GOVERNANCE STRUCTURE OF DOBCEL – St MARY MacKILLOP COLLEGE

DOBCEL

Diocese of Ballarat Catholic Education Limited (DOBCEL) is the company established by Bishop Paul Bird to become the governing body for schools in the Ballarat Diocese.

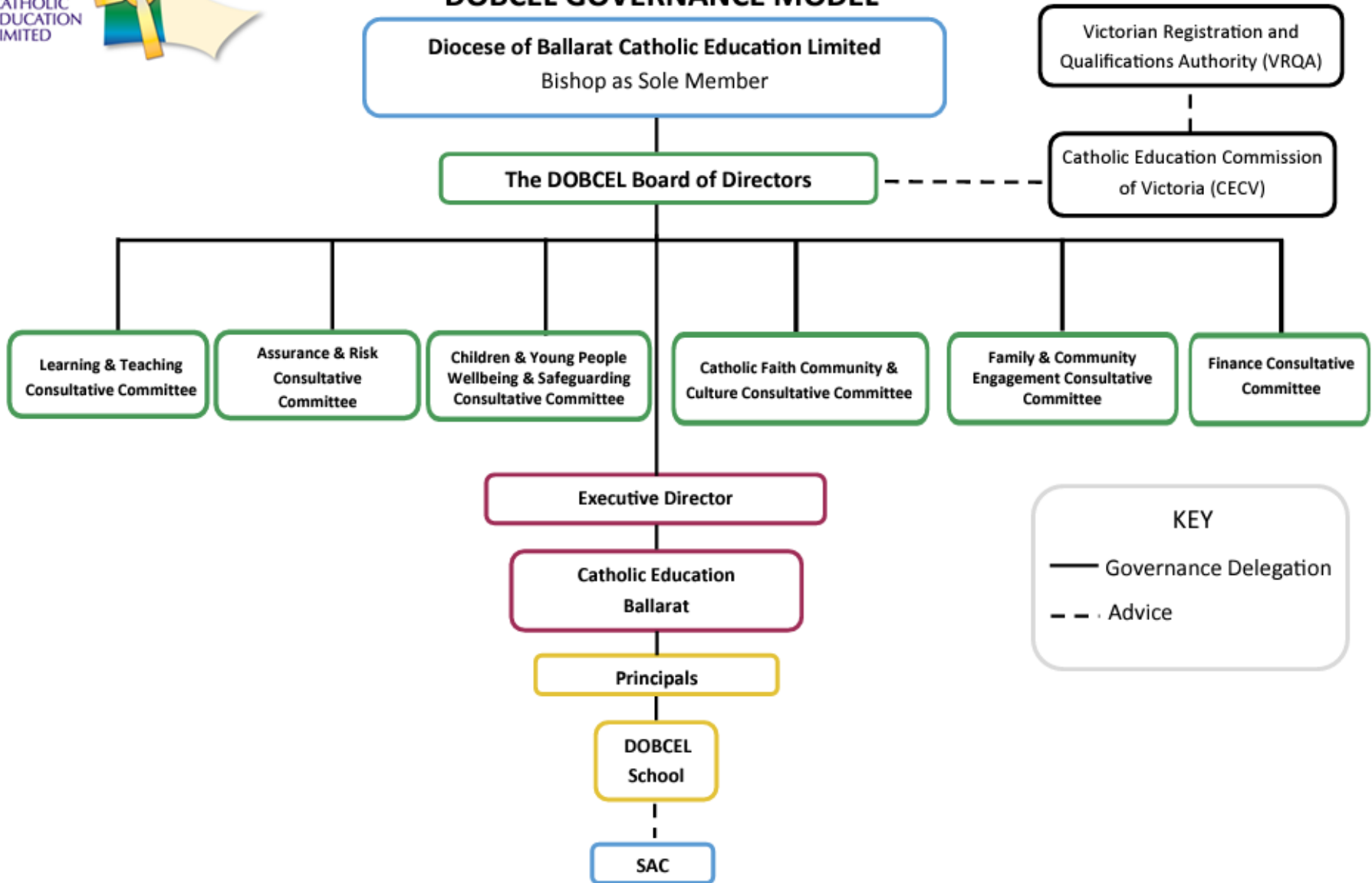
DOBCEL was established to fulfill the following objectives:

- To ensure consistency and professionalism of governance for parish schools.
- To ensure the continued pastoral ministry of priests in parish schools.
- To allow the ongoing engagement of parish and local communities.
- To ensure effective and transparent stewardship of education resources.
- To allow the Diocese of Ballarat to address Recommendation 16.6 of the Royal Commission (that parish priests are not the employers of principals and teachers in Catholic schools).
- To allow Catholic education authorities to meet the Victorian Government's requirement for DOBCEL schools that receive government funding to be governed by DOBCEL.

Information regarding the Board and Director profiles can be accessed at the following link: <https://dobcel.catholic.edu.au/about-dobcel/board-director-profiles/>



DOBCEL GOVERNANCE MODEL

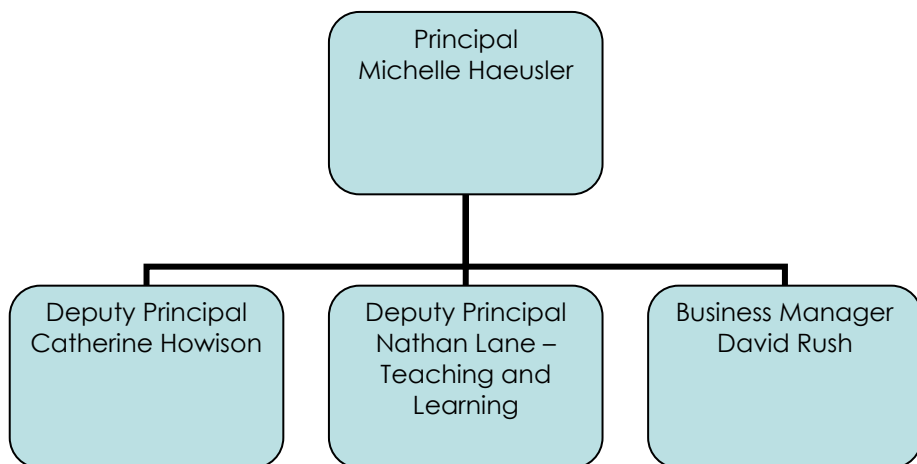


KEY

— Governance Delegation

- - - Advice

St Mary MacKillop College Governance Model



Principal, Michelle Haeusler

1.1 ROLE OF THE PRINCIPAL

The Principal models' faith in action to enact a shared vision that focuses on the delivery of a contemporary, high quality, and evidence-based learning experience for students. Through professional and personal example, the Principal leads the school in accordance with the Australian Institute for Teaching and School Leadership (AITSL) standards and the Victorian Institute of Teaching Code of Conduct.

The Principal assumes operational and strategic responsibility for the effective leadership and stewardship of all school resources and will establish a collaborative and supportive learning community.

1.2 ROLE OF THE DEPUTY PRINCIPAL

The Deputy Principal's (DP's) role is to support the Principal in ensuring excellent teaching and learning in a faith-centered environment. The Deputy Principal works in collaboration with the Principal and other senior leaders to develop and monitor the school's vision and mission and to have active oversight of processes that facilitate the work of both staff and students. This includes teachings as understood and passed on by the Catholic Church, St Aloysius primary school vision, mission and values, relevant legislation and regulatory requirements and DOBCEL policy and procedures.

1.3 ROLE OF THE BUSINESS MANAGER

The Business manager provides strategic leadership, financial planning and management, administrative services and accounting, property and contract management and oversees the overall running of the schools' facilities and services.

1.4 PRINCIPAL PROFILE

Michelle Haeusler oversees daily school operations of St Mary MacKillop College as the School Principal. Michelle has worked within Catholic Education for over 28 years. Michelle strives to provide a productive and community based educational environments for all students Michelle is proactive in improving curriculum to enhance opportunities for students and has developed key curriculum.

1.5 School Governance members Qualifications and Experience:

| Staff Member | Position | Qualifications | Experience |
|-------------------|---|---|---|
| Michelle Haeusler | Principal | <ul style="list-style-type: none"> • Bachelor of Science • Graduate Diploma of secondary Education • Masters of Educational Leaderships | 28 years in Catholic Education with various roles including: <ul style="list-style-type: none"> • 10 years Principal experience • 2 years Deputy Principal |
| Catherine Howison | Deputy Principal | <ul style="list-style-type: none"> • Diploma of Arts (Graphic Design) • Graduate Diploma Education (Art & RE) • Masters in Educational Leadership | <ul style="list-style-type: none"> • 26 years teaching experience • 2 years' experience as Deputy Principal |
| Nathan Lane | Deputy Principal, Teaching and Learning | <ul style="list-style-type: none"> • Bachelor of Education • Master of Education: Leadership and Administration • Graduate Certificate in Teaching Religious Education | <ul style="list-style-type: none"> • 24 years' teaching experience • 4 years as Deputy Principal Other roles including: <ul style="list-style-type: none"> • |
| David Rush | Business Manager | <ul style="list-style-type: none"> • Masters of Business Administration | <ul style="list-style-type: none"> • 20+ years at St Mary MacKillop College • 15+ years banking and finance • 5 years self employed |

1.6 Principal responsibilities:

| | |
|---------------------------------------|--|
| Employment and Human Resources | <ul style="list-style-type: none"> • With DOBCEL, develop and document protocols and delegations for staff selection, employment and deployment • Develop and implement policy/protocols for screening, employment of staff & appointment to positions of leadership • Prepare staff appointment documents and deploy staff in accordance with DOBCEL Policy • Monitor staff accreditation processes • Oversee selection, appointment, and professional conduct of staff • Seek HR advice as required • Co-operate with DOBCEL on termination of staff in accordance with the current industrial agreement • Ensure staff contracts are current and supporting documentation meets regulatory and legislative requirements |
| Financial | <ul style="list-style-type: none"> • With DOBCEL, develop and document formal financial delegations • Develop, evaluate, monitor, implement and report on budget as required • Ensure processes in place for effective financial management • Discuss auditor's report with DOBCEL and prepare and implement management response/s • Establish/oversee finance committee, where appropriate • Observe and report on financial delegations to DOBCEL |
| Formation | <ul style="list-style-type: none"> • Undertake preparation and ongoing formation to cooperate in the process of governance • Develop skills in and understanding of effective school governance |
| Grievances | <ul style="list-style-type: none"> • Ensure a process is in place for dealing with complaints and grievances • Ensure staff & community are aware of grievance processes • Consult with SAC and DOBCEL where appropriate |
| Leadership of Learning | <ul style="list-style-type: none"> • Stay abreast of current educational thinking & research • Lead curriculum development, evaluation, and review • Report on student achievement & learning to SAC • Monitor, guide & build capability of staff for quality teaching • Provide professional learning for staff |

| | |
|--|--|
| Legislation | <ul style="list-style-type: none"> • Ensure the school operates within legislative, statutory and regulatory frameworks • Seek DOBCEL advice where required |
| Occupational Health and Safety | <ul style="list-style-type: none"> • Ensure OHS Management Plan is in place, enacted and actively monitored • Oversee cyclic review of OHS policies in collaboration with DOBCEL |
| Oversight and Compliance | <ul style="list-style-type: none"> • Provide evidence to DOBCEL and SAC that all is in order through reporting on progress in accordance with school improvement plan goals, compliance, leadership structures, due diligence, and risk • Prepare and publish Annual Report to School Community (Compliance Report) in liaison with DOBCEL usually March) • Ensure appropriate promotion of school in liaison with DOBCEL |
| Planning and Infrastructure | <ul style="list-style-type: none"> • Lead Facility Master Planning • Assure and Implement: <ul style="list-style-type: none"> ▪ Facility and Grounds Maintenance ▪ Statutory and Regulatory Compliance ▪ Future Provision (school and system level) |
| Policy | <ul style="list-style-type: none"> • Ensure cyclic review, formulation, and implementation of policies as per DOBCEL advice • Monitor implementation of policy |
| Principal Selection, Appointment, Contract, Performance | <ul style="list-style-type: none"> • Provide detailed annual report to DOBCEL as required in contract (usually November) • Participate in induction, appraisal & review as per DOBCEL policy |
| Risk Management | <ul style="list-style-type: none"> • Ensure a risk management strategy is in place • Develop, maintain and monitor a risk register • Ensure all staff understand their responsibilities regarding risk • Work with DOBCEL and staff to define, mitigate/eliminate and monitor risk • Report risk and controls to DOBCEL |
| School Improvement | <ul style="list-style-type: none"> • Lead school self-review process • Develop, implement, monitor, and evaluate School Improvement Plan & Annual Action Plan • Lead development and monitoring of master plan |

End of Document